

2017 INVEST IN COOK



Toni Preckwinkle, President

Cook County Board of Commissioners

Martha Martinez, Chief Administrative Officer

Bureau of Administration



John Yonan, P.E., Superintendent

Department of Transportation & Highways



2017 INVEST IN COOK AWARDS

PROJECT NAME	APPLICANT	PROJECT TYPE	PROJECT PHASE	AWARDED
West Bartlett Road/Devon Avenue Swale and Bike Path Replacement	Village of Bartlett	Bike/Ped	Design Engineering	\$75,000
Ride Hailing Technologies Study and Pilot: Reducing Intermodal Transport Gaps and Improving Access to Jobs for All	Village of Bedford Park	Transit	Planning Study	\$221,800
Proviso Drive Improvements	Village of Berkeley	Freight	Preliminary Engineering	\$342,000
El Paseo Bicycle and Pedestrian Path	Chicago Department of Planning and Development	Bike/Ped	Right-of-Way	\$500,000
Vision Zero High Crash Corridor Improvements	Chicago Department of Transportation	Roadway, Bike/Ped and Transit	Construction	\$1,374,125
Ridgeland Corridor Bus Pads/ Shelter Project	Village of Chicago Ridge	Transit	Design Engineering and Construction	\$187,500
The Blue Island Yard Joint Rail Intermodal Facility: Division Street	Chicago Southland Economic Development Corporation	Freight	Preliminary Engineering	\$200,000
CTA Blue Line Traction Power Study	Chicago Transit Authority (CTA)	Transit	Planning Study	\$235,000
135th Street Resurfacing	Village of Crestwood	Roadway, Bike/Ped	Preliminary Engineering	\$90,000
Des Plaines River Bike Trail at the Union Pacific Railroad	Forest Preserve District of Cook County	Bike/Ped	Preliminary Engineering	\$100,000
Franklin Avenue Reconstruction Project	Village of Franklin Park	Freight	Planning Study	\$320,000
Skokie Valley Trail Improvements	Village of Glenview	Bike/Ped	Preliminary Engineering	\$188,000
Butler Drive: Improving Safety and Mobility of Truck Traffic at the Illinois Port District	Illinois International Port District	Freight	Preliminary Engineering	\$300,000
Connecting Pedestrians to Pace	Village of Lansing	Bike/Ped	Preliminary Engineering	\$70,000
Touhy Avenue and Cicero Avenue Geometry Improvements	Village of Lincolnwood	Roadway	Preliminary Engineering	\$175,000
Washington Blvd - 22nd Avenue to 1st Avenue	Village of Maywood	Roadway, Bike/Ped	Preliminary Engineering	\$206,000
Armitage Avenue Reconstruction	Village of Melrose Park	Freight, Bike/Ped	Preliminary Engineering	\$203,000
Renovation of the 147th Street (Sibley Blvd.) Metra Electric Station	Metra, the Commuter Rail Division of the RTA	Transit	Design Engineering	\$300,000
Waukegan Road Sidewalk Gap	Village of Northfield	Bike/Ped	Construction	\$201,000
South Halsted Bus Corridor Enhancement Project: Environmental Analysis and Advanced Design	Pace Suburban Bus	Transit	Planning Study	\$500,000

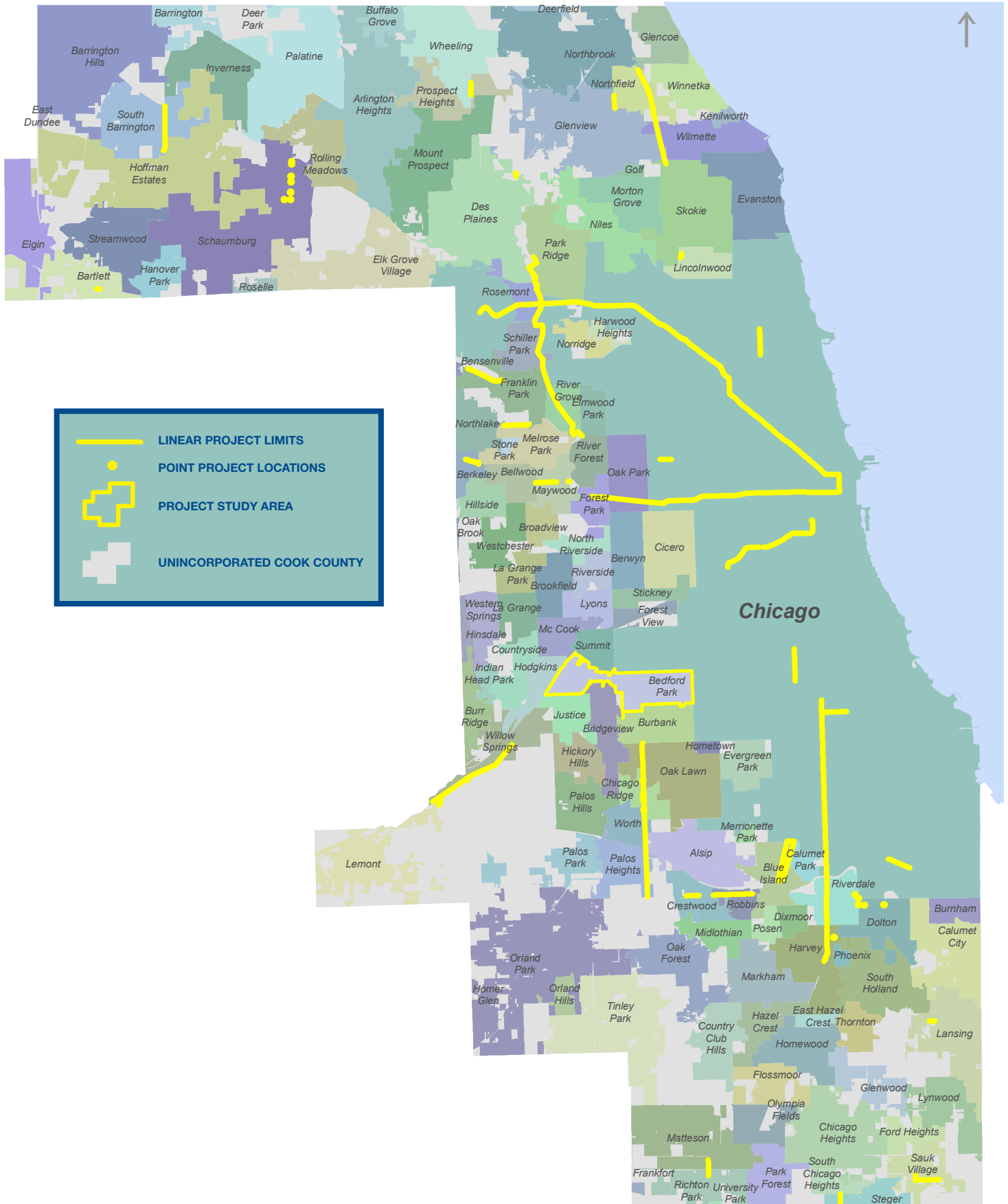


2017 INVEST IN COOK AWARDS

PROJECT NAME	APPLICANT	PROJECT TYPE	PROJECT PHASE	AWARDED
Wolf Road Sidewalk Connectivity Project	City of Prospect Heights	Bike/Ped	Construction	\$140,000
Poplar Avenue Bike Trail Extension	Village of Richton Park	Bike/Ped	Preliminary Engineering	\$45,000
135th Street Resurfacing	Village of Robbins	Roadway	Construction	\$330,000
Des Plaines River Trail-Touhy Avenue to North Avenue	Village of Rosemont West Central Municipal Conference	Bike/Ped	Preliminary Engineering	\$309,000
223rd Street and Cornell Avenue Street Rehabilitation	Village of Sauk Village	Roadway	Construction	\$75,000
Greater Woodfield Area Traffic Flow Improvements	Village of Schaumburg	Roadway	Construction	\$200,000
Barrington Road Bike Path	Village of South Barrington	Bike/Ped	Construction	\$76,000
Freight Planning for the Dolton and Riverdale Gateway	South Suburban Mayors and Managers Association	Freight	Planning Study	\$120,000
Union Avenue Road Diet, Bike Lane and Sidewalk Infill Project	Village of Steger	Roadway, Bike/ Ped	Construction	\$90,000
Green Corridor	Village of Willow Springs	Freight, Bike/Ped	Preliminary Engineering	\$48,500



2017 INVEST IN COOK PROGRAM

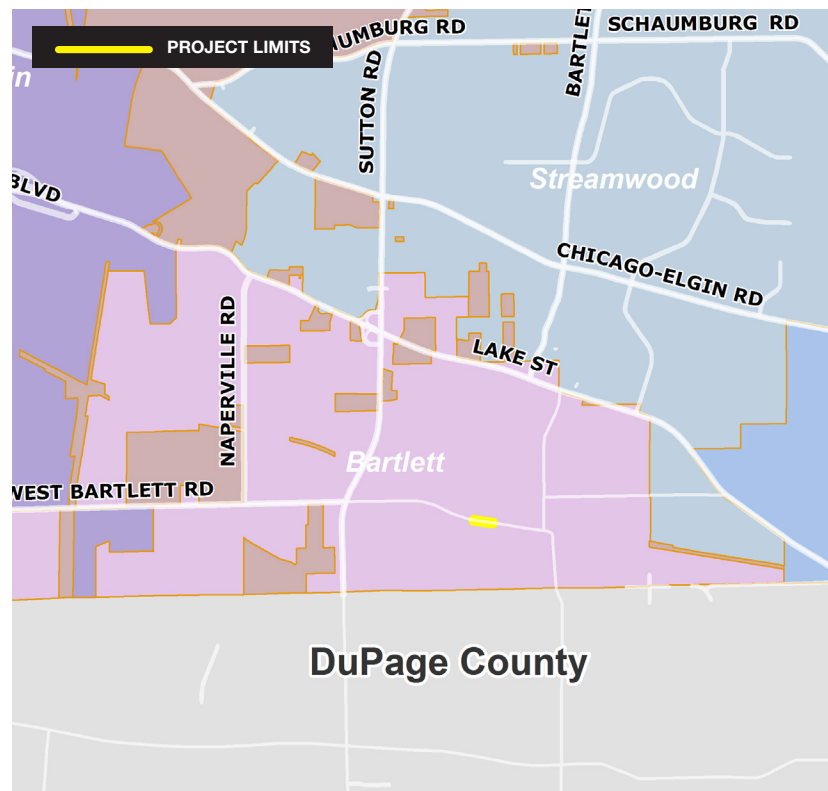


WEST BARTLETT ROAD/DEVON AVENUE SWALE AND BIKE PATH REPLACEMENT

PROJECT APPLICANT	COUNTY BOARD DISTRICT(S)	PROJECT TYPE
Village of Bartlett	15	Bike/Ped
PROJECT PHASE	INVEST IN COOK GRANT AWARD	TOTAL PHASE COST
Design Engineering	\$75,000	\$75,000

PROJECT DESCRIPTION

This grant will fund design engineering for an existing bike path along West Bartlett Road that has significant flooding. An improved design will eliminate drainage issues along the path, provide better alternative access to the downtown Metra station and jobs for residents without a car or with disabilities, and benefit Bartlett businesses.



ALIGNMENT WITH *CONNECTING COOK COUNTY*

- **Prioritizes transit and other transportation alternatives** by encouraging non-auto trips to key destinations; and
- **Maintains and modernizes** existing infrastructure.



Department of
Transportation
and Highways



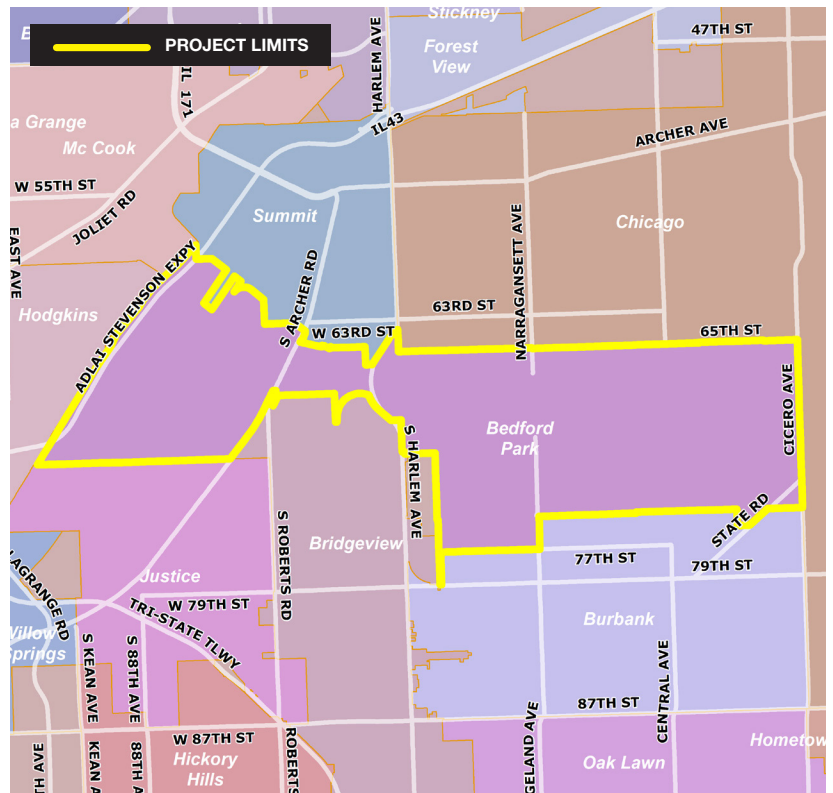
AN INITIATIVE OF: CONNECTING
COOK COUNTY

RIDE HAILING TECHNOLOGIES STUDY AND PILOT: REDUCING INTERMODAL TRANSPORT GAPS AND IMPROVING ACCESS TO JOBS FOR ALL

PROJECT APPLICANT	COUNTY BOARD DISTRICT(S)	PROJECT TYPE
Village of Bedford Park	6, 11 and 16	Transit
PROJECT PHASE	INVEST IN COOK GRANT AWARD	TOTAL PHASE COST
Planning Study and Pilot	\$221,800	\$360,000

PROJECT DESCRIPTION

This grant will fund a study and pilot to examine how emerging transportation alternatives such as ride hailing and sharing applications can be tapped to promote transit connectivity and equal access to employment opportunities. These technologies have the potential to reduce first-/last-mile gaps between transportation nodes and destinations within the Village. Existing gaps in service negatively impact workers, employers, visitors, and residents in Bedford Park, an important industrial and commercial jobs center for Cook County.



ALIGNMENT WITH *CONNECTING COOK COUNTY*

- **Prioritizes transit and other transportation alternatives** by ensuring that emerging private mobility services and technologies are integrated with the existing transportation system;
- **Promotes equal access** to opportunities for disadvantaged residents working in the community by providing more equitable transportation services; and
- **Increases investment in transportation** by leveraging other funding.

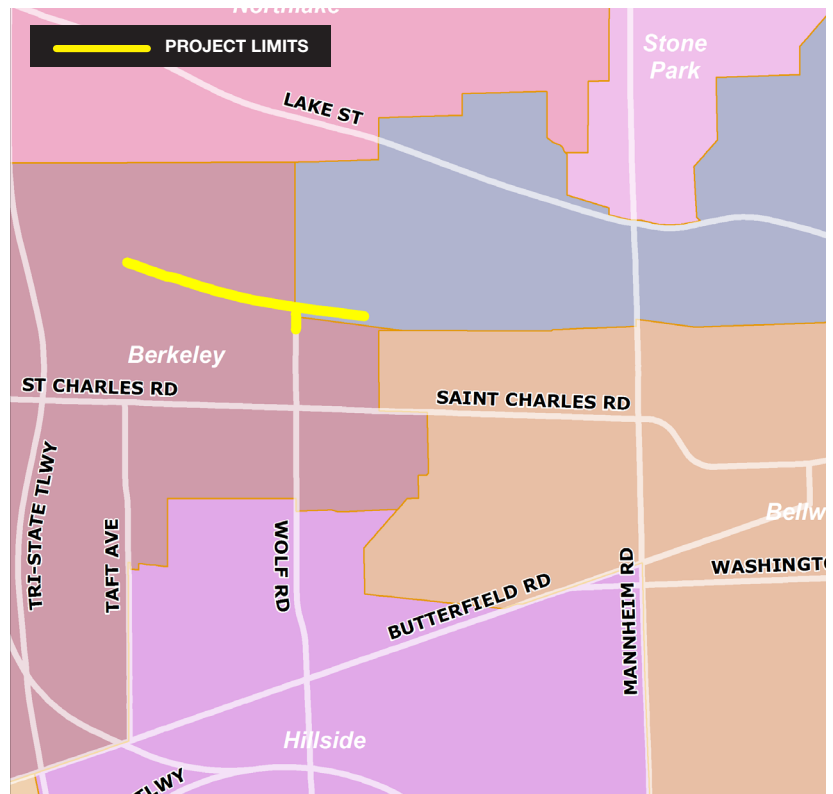


PROVISO DRIVE IMPROVEMENTS

PROJECT APPLICANT	COUNTY BOARD DISTRICT(S)	PROJECT TYPE
Village of Berkeley	16 and 17	Freight
PROJECT PHASE	INVEST IN COOK GRANT AWARD	TOTAL PHASE COST
Preliminary Engineering	\$342,000	\$342,000

PROJECT DESCRIPTION

This grant funds preliminary engineering for the reconstruction of Proviso Drive, a truck route serving industrial districts in Berkeley and Melrose Park that also provides access to Union Pacific's Global II Intermodal Terminal and Proviso Yard—busy rail facilities in Cook County and critical drivers of the economy's freight sector. High level design concepts will be developed for Proviso Drive and a portion of Wolf Road to determine how best to provide improved truck access to warehouse and distribution businesses located in the industrial district and to ensure that these roads are designed to provide sufficient width and turning radii for commercial trucks.



ALIGNMENT WITH *CONNECTING COOK COUNTY*

- **Supports the region's role as a freight center** by:
 - Fostering efficient operations and growth in the freight sector;
 - Reinforcing freight-supportive land uses;
- **Promotes equal access** to opportunities for an underserved community; and
- **Maintains and modernizes** existing transportation infrastructure.



EL PASEO BICYCLE AND PEDESTRIAN PATH

PROJECT APPLICANT	COUNTY BOARD DISTRICT(S)	PROJECT TYPE
Chicago Department of Planning and Development	7	Bike/Ped
PROJECT PHASE	INVEST IN COOK GRANT AWARD	TOTAL PHASE COST
Right-of-Way Acquisition	\$500,000	\$1,500,000

PROJECT DESCRIPTION

This grant funds right-of-way acquisition for the creation of a new bicycle and pedestrian trail. The El Paseo path will convert abandoned rail tracks along Sangamon Street, Cermak Road, Blue Island Avenue and 26th Street into a 4-mile at-grade bicycle and walking path connecting the Pilsen and Little Village neighborhoods. These communities currently have only .59 acres of open space per 1,000 residents, well below the city's minimum recommendations. Potential features for the trail include cross-generational gathering spaces; community gardens; art, mural, or cultural installations; separated lanes for walking/biking; natural areas; signage; and stormwater management features.



ALIGNMENT WITH *CONNECTING COOK COUNTY*

- **Prioritizes transit and other transportation alternatives** by encouraging non-auto trips and connecting neighborhoods;
- **Promotes equal access** to opportunities in disadvantaged communities in south and west Cook County; and
- **Increases investment in transportation** by leveraging other funding.

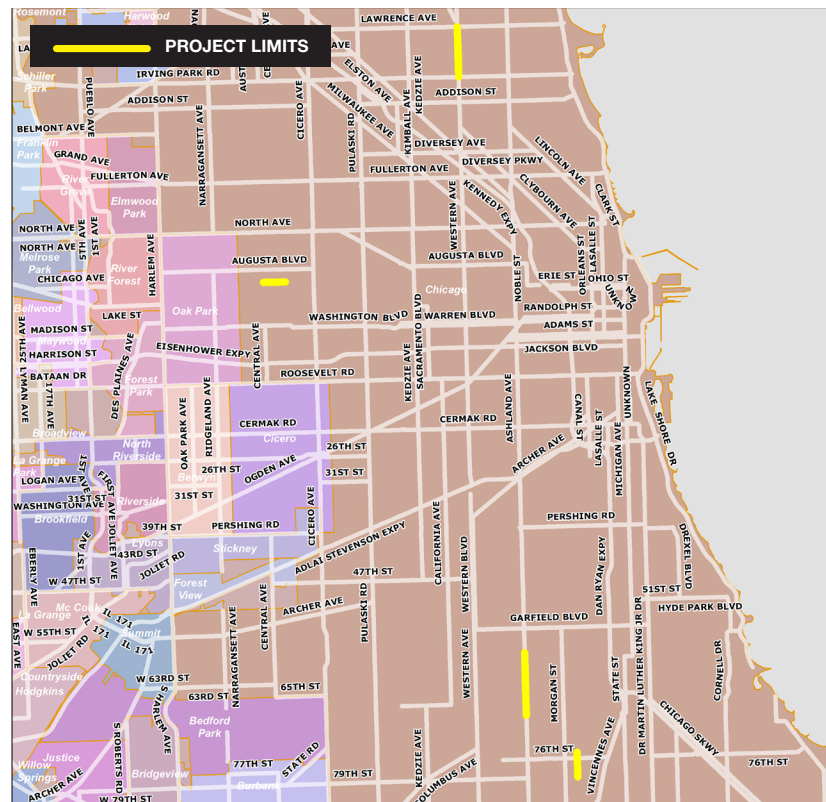


VISION ZERO HIGH CRASH CORRIDOR IMPROVEMENTS

PROJECT APPLICANT	COUNTY BOARD DISTRICT(S)	PROJECT TYPE
Chicago Department of Transportation	1, 2, 3, 10 and 12	Roadway, Bike/Ped and Transit
PROJECT PHASE	INVEST IN COOK GRANT AWARD	TOTAL PHASE COST
Construction	\$1,374,125	\$1,374,125

PROJECT DESCRIPTION

This grant is for construction funding to implement traffic safety improvements and improved pedestrian and bicycle accommodations on four High Crash Corridors within Chicago. Improvements will include sidewalk rehabilitation and street trees, new ADA ramps, pedestrian refuge islands, curb bump-outs, and pedestrian signalization improvements such as pedestrian countdown timers and leading pedestrian intervals. These improvements will make it safer and more inviting to walk, bike, and access transit. Landscaping and narrowed travel lanes will also create a more inviting streetscape and encourage slower speeds.



ALIGNMENT WITH *CONNECTING COOK COUNTY*

- **Prioritizes transit and other transportation alternatives** by encouraging non-auto trips and making travel safer for all users;
- **Promotes equal access** to opportunities in disadvantaged communities in south and west Cook County; and
- **Maintains and modernizes** existing infrastructure while also enhancing the quality of life in the affected communities.

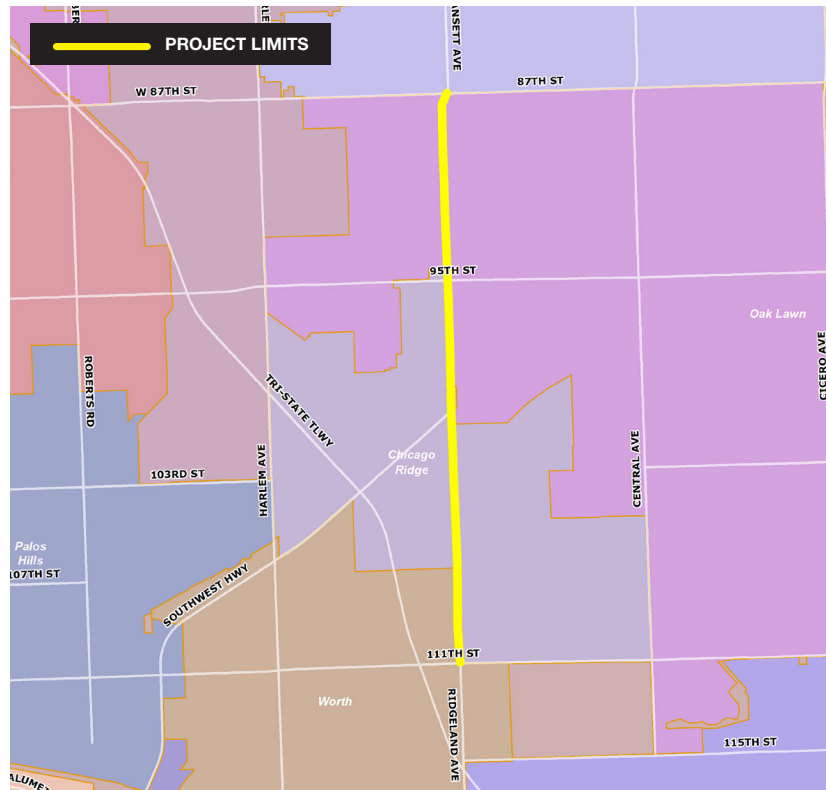


RIDGELAND CORRIDOR BUS PADS/SHELTER PROJECT

PROJECT APPLICANT	COUNTY BOARD DISTRICT(S)	PROJECT TYPE
Village of Chicago Ridge	6 and 17	Transit
PROJECT PHASE	INVEST IN COOK GRANT AWARD	TOTAL PHASE COST
Design Engineering and Construction	\$187,500	\$225,000

PROJECT DESCRIPTION

In 2013, Cook County, in partnership with the Regional Transportation Authority and adjoining communities, completed a corridor study of Ridgeland Avenue from 87th Street to 111th Street that prioritized the installation of bus pads and shelters at existing Pace bus stops in support of transit riders along this route. Design engineering will identify strategic locations for new concrete pads and shelters along the corridor based upon ridership volumes and proximity to trip-generating facilities such as shopping centers, intersections with other Pace and/or Metra service, and other community destinations and cover the cost of their installation. The grant will pay for the installation of concrete pads upon which Pace can place bus shelters.



ALIGNMENT WITH *CONNECTING COOK COUNTY*

- **Prioritizes transit and other transportation alternatives** by providing shelters for users of public transportation;
- **Maintains and modernizes** existing transportation infrastructure while also enhancing the quality of life in the affected communities; and
- **Increases investment in transportation** by leveraging other funding.

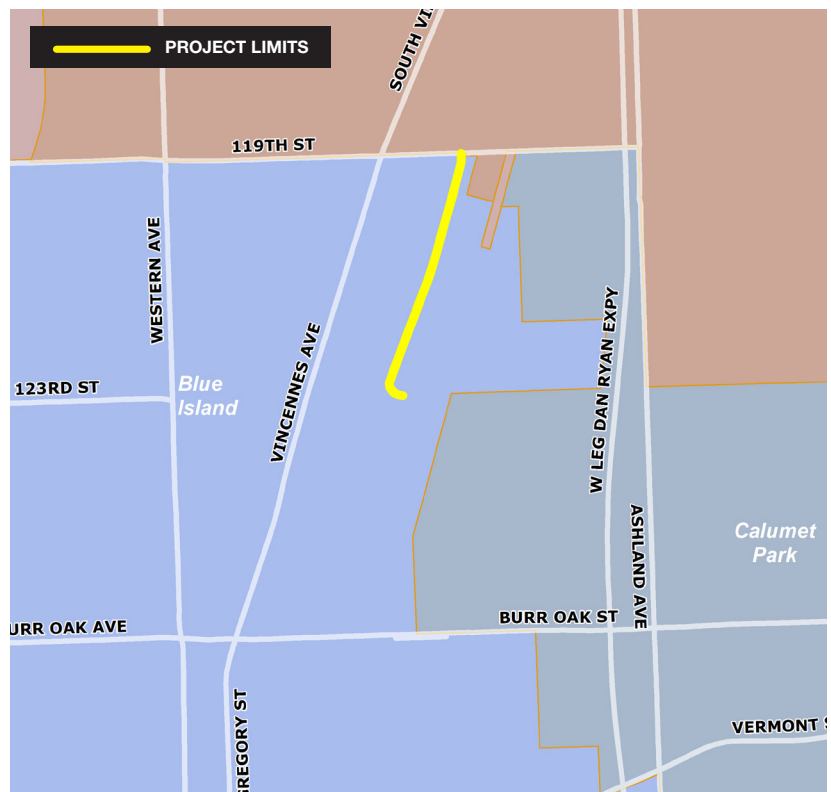


THE BLUE ISLAND YARD JOINT RAIL INTERMODAL FACILITY: DIVISION STREET

PROJECT APPLICANT	COUNTY BOARD DISTRICT(S)	PROJECT TYPE
Chicago Southland Economic Development Corporation	5	Freight
PROJECT PHASE	INVEST IN COOK GRANT AWARD	TOTAL PHASE COST
Preliminary Engineering	\$200,000	\$200,000

PROJECT DESCRIPTION

This grant funds preliminary engineering for the reconstruction of Division Street, a road that provides truck access to the Iowa Interstate Railroad and Chicago Rail Link's Blue Island Intermodal Yards. This freight project will improve the safety of existing trucking operations and encourage new business development along the route and additional shipping activity on these short line railroads by bringing a deficient road to a state of good repair.



ALIGNMENT WITH *CONNECTING COOK COUNTY*

- **Supports the region's role as a freight center** by:
 - Fostering efficient operations and growth in the freight sector;
 - Reinforcing freight-supportive land uses;
- **Promotes equal access** to opportunities by facilitating economic growth in an area with few jobs;
- **Maintains and modernizes** existing transportation infrastructure; and
- **Increases investment in transportation** by leveraging other funding.

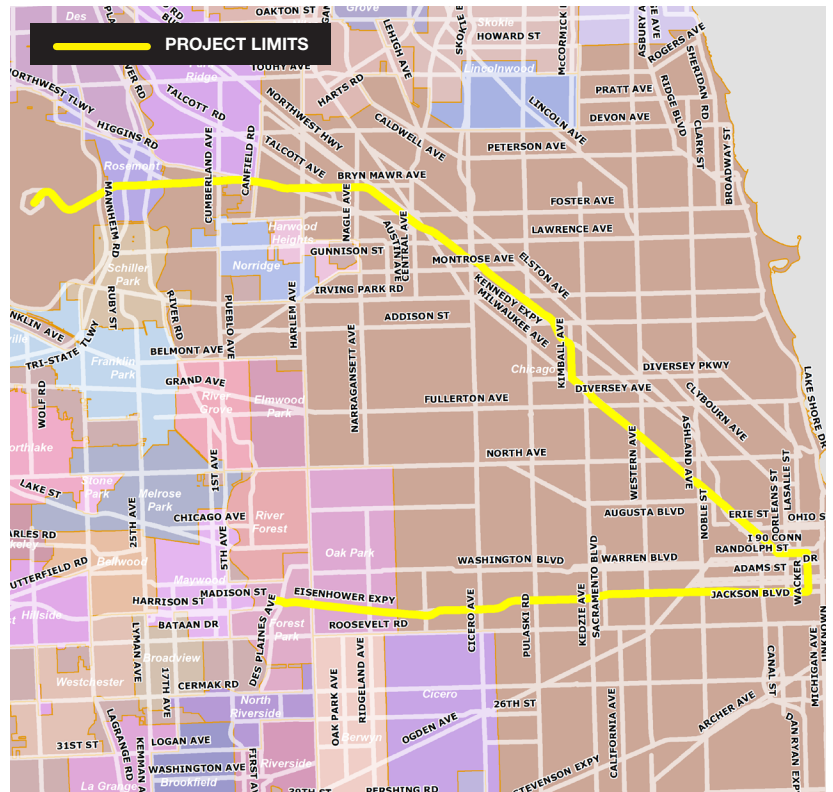


CTA BLUE LINE TRACTION POWER STUDY

PROJECT APPLICANT	COUNTY BOARD DISTRICT(S)	PROJECT TYPE
Chicago Transit Authority (CTA)	1, 2, 3, 8, 9, 10 and 12	Transit
PROJECT PHASE	INVEST IN COOK GRANT AWARD	TOTAL PHASE COST
Feasibility/Planning Study	\$235,000	\$625,000

PROJECT DESCRIPTION

This grant funds a comprehensive traction power study on the CTA Blue Line to inform conceptual planning activities and improve the line's capacity and reliability. The traction power study will enable CTA to make strategic recommendations on critical enhancements to its rail system, increasing its speed, reliability, and efficiency. Identified improvements will increase capacity on a line that is limited in its ability to provide a necessary level of traction power to meet growing demand.



ALIGNMENT WITH *CONNECTING COOK COUNTY*

- **Prioritizes transit and other transportation alternatives** by encouraging non-auto trips;
- **Promotes equal access** to opportunities in disadvantaged communities in west Cook County;
- **Maintains and modernizes** existing infrastructure while also enhancing the quality of life in the affected communities; and
- **Increases investment in transportation** by leveraging other funding.

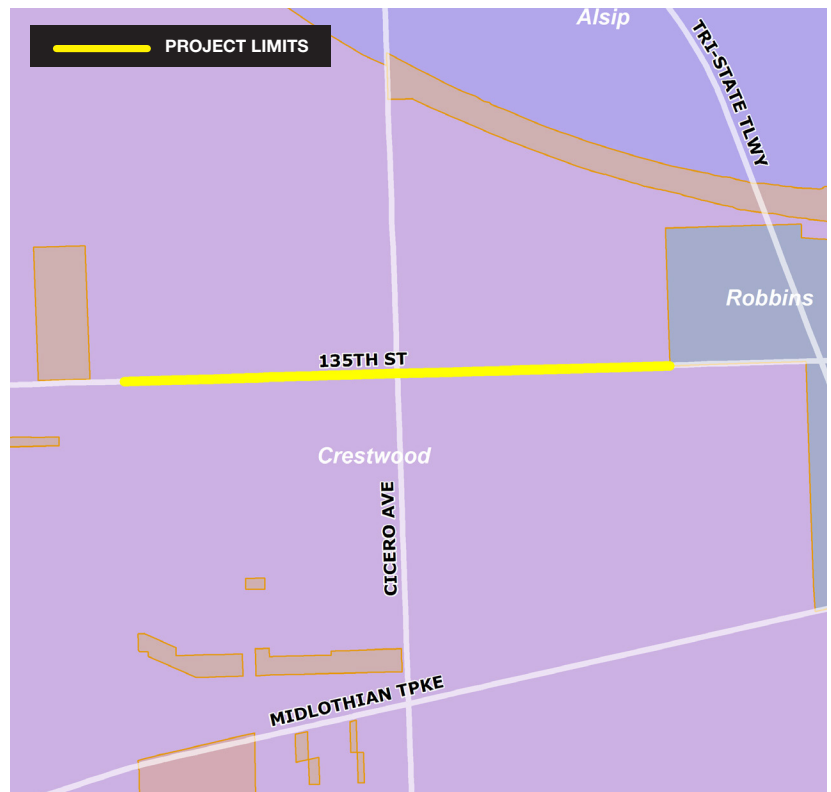


135th STREET RESURFACING PROJECT

PROJECT APPLICANT	COUNTY BOARD DISTRICT(S)	PROJECT TYPE
Village of Crestwood	6	Roadway, Bike/Ped
PROJECT PHASE	INVEST IN COOK GRANT AWARD	TOTAL PHASE COST
Preliminary Engineering	\$90,000	\$213,980

PROJECT DESCRIPTION

This grant will fund preliminary engineering for the resurfacing of 135th Street, an improvement expected to include a new bike path, ADA compliant sidewalks, crosswalk improvements, pedestrian flashing beacon and a new storm sewer system. This project will provide connectivity to other existing and future paths and sidewalks within Crestwood and the neighboring Villages of Robbins and Midlothian, and to a multi-use path in the Cook County Forest Preserve's Rubio Woods Preserve (Tinley Creek Trail).



ALIGNMENT WITH *CONNECTING COOK COUNTY*

- **Prioritizes transit and other transportation alternatives** by encouraging non-auto trips, connections between communities and access to natural resources;
- **Promotes equal access** to opportunities by investing in underserved communities in the south suburbs;
- **Maintains and modernizes** existing transportation infrastructure while also enhancing the quality of life in the affected communities; and
- **Increases investment in transportation** by leveraging other funding.

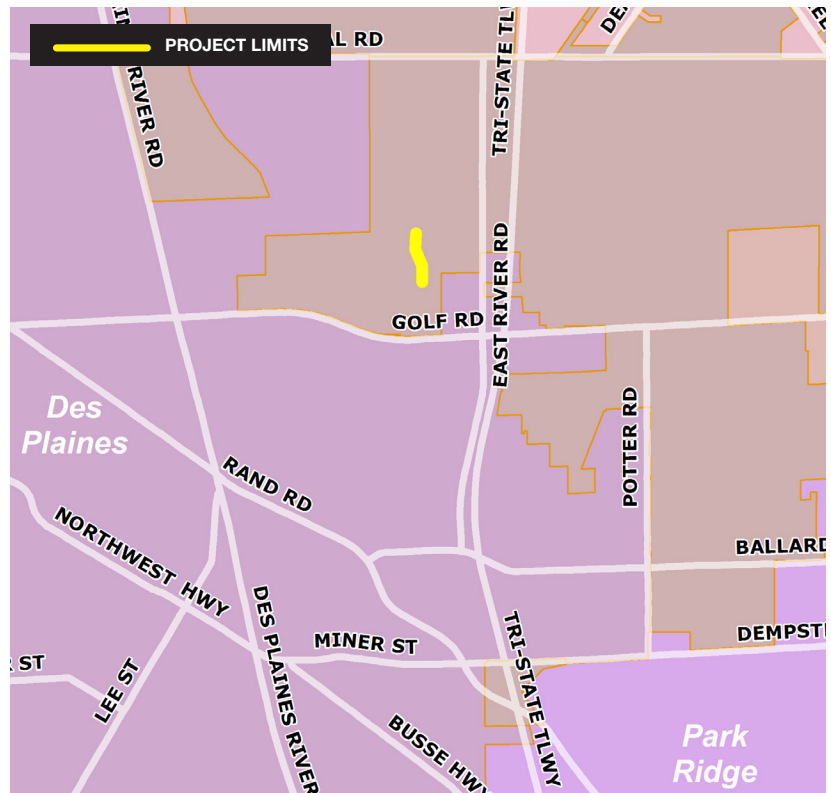


DES PLAINES RIVER BIKE TRAIL AT THE UNION PACIFIC RAILROAD

PROJECT APPLICANT	COUNTY BOARD DISTRICT(S)	PROJECT TYPE
Forest Preserve District of Cook County	9	Bike/Ped
PROJECT PHASE	INVEST IN COOK GRANT AWARD	TOTAL PHASE COST
Preliminary Engineering	\$100,000	\$150,000

PROJECT DESCRIPTION

This grant funds preliminary engineering to address a significant gap in the Des Plaines River Trail at the Union Pacific Railroad tracks located just north of Golf Road in the City of Des Plaines. The railroad tracks north of Golf Road create a significant interruption to the Trail's continuity, present an unsafe environment for trail users, and discourage use of the trail by residents of neighboring communities. Taken in tandem with the study to be carried out by the Village of Rosemont/the West Central Municipal Conference, this Forest Preserve study will encourage greater recreational use of the entire Des Plaines River Trail and the many natural facilities with which it connects.



ALIGNMENT WITH *CONNECTING COOK COUNTY*

- **Prioritizes transit and other transportation alternatives** by encouraging non-auto trips;
- **Maintains and modernizes** existing transportation infrastructure while also enhancing the quality of life in the affected communities; and
- **Increases investment in transportation** by leveraging other funding.

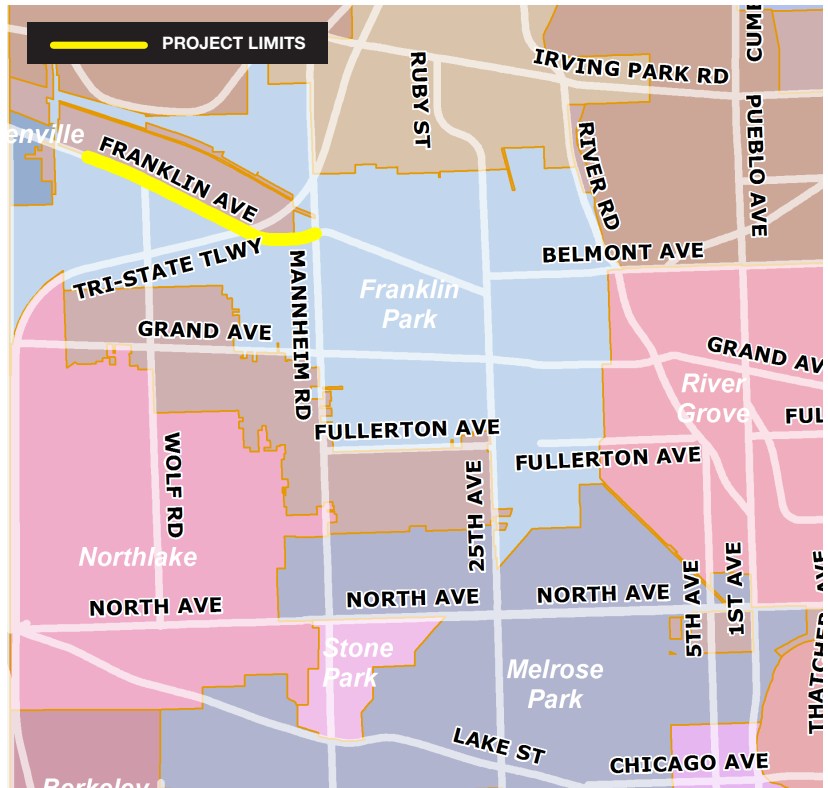


FRANKLIN AVENUE RECONSTRUCTION PROJECT

PROJECT APPLICANT	COUNTY BOARD DISTRICT(S)	PROJECT TYPE
Village of Franklin Park	16 and 17	Freight
PROJECT PHASE	INVEST IN COOK GRANT AWARD	TOTAL PHASE COST
Planning and Feasibility Study	\$320,000	\$1,600,000

PROJECT DESCRIPTION

This grant funds a planning and feasibility study for the reconstruction and widening of Franklin Avenue, an access road that serves 430 industrial businesses and 13,000 jobs within the Village of Franklin Park. The improvement is necessitated by narrow roads that make it difficult for trucks to navigate through the industrial area and by a projected increase in freight and vehicular traffic resulting from the Elgin O'Hare Western Access. The feasibility study will include a multi-use path for pedestrians and bicyclists designed to strengthen employee connections to Pace routes and the Metra Mannheim Station.



ALIGNMENT WITH *CONNECTING COOK COUNTY*

- **Prioritizes transit and other transportation alternatives** will be enhanced by providing a multi-use trail for employees on bicycle and foot wanting to connect to public transportation;
- **Supports the region's role as a freight center** by:
 - Fostering efficient operations and growth in the freight sector;
 - Reinforcing freight-supportive land uses;
- **Maintains and modernizes** existing transportation infrastructure; and
- **Increases investment in transportation** by leveraging other funding.

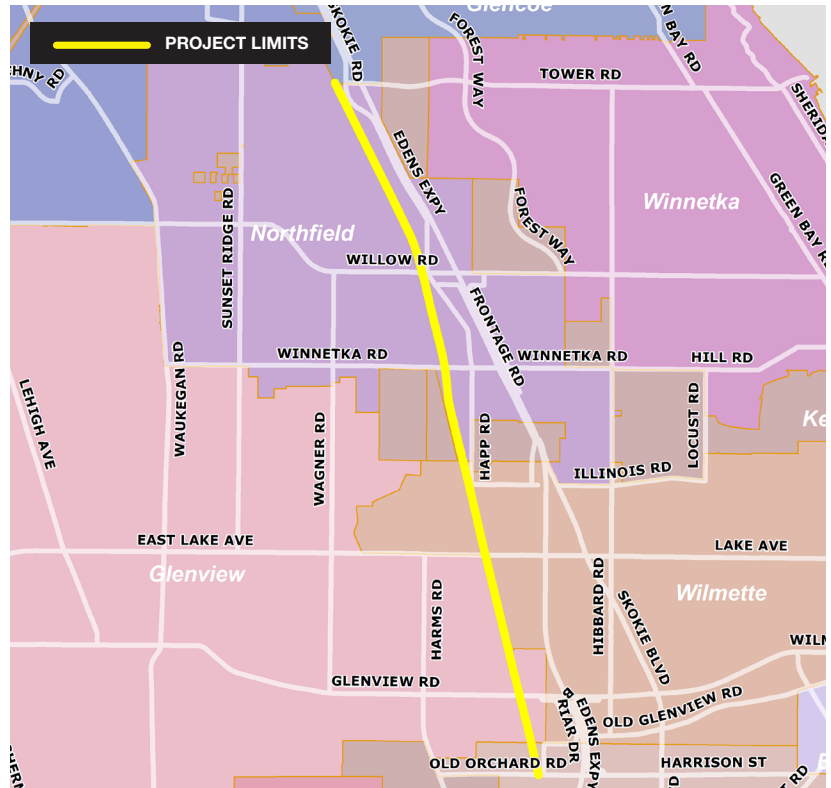


SKOKIE VALLEY TRAIL IMPROVEMENTS

PROJECT APPLICANT	COUNTY BOARD DISTRICT(S)	PROJECT TYPE
Village of Glenview	13 and 14	Bike/Ped
PROJECT PHASE	INVEST IN COOK GRANT AWARD	TOTAL PHASE COST
Preliminary Engineering	\$188,000	\$290,000

PROJECT DESCRIPTION

This grant will fund preliminary engineering of a 3.9-mile segment of the Skokie Valley Trail—the last remaining gap in this regionally significant trail, which provides bike connectivity between Lake Bluff and Chicago. The Villages of Glenview (sponsor), Northfield and Wilmette propose to study how this multi-use trail should be designed and built along a discontinued Union Pacific Railroad corridor and Com Ed right-of-way that traverse these communities. The proposed segment of the Skokie Valley Trail will provide a regional bike connection between Lake and Cook Counties, multiple communities, regional and local trail networks, transit stations, schools, retail establishments, parks, natural areas and employment centers.



ALIGNMENT WITH *CONNECTING COOK COUNTY*

- **Prioritizes transit and other transportation alternatives** by encouraging non-auto trips, connections between counties in the region and access to many natural resources; and
- **Increases investment in transportation** by leveraging other funding.

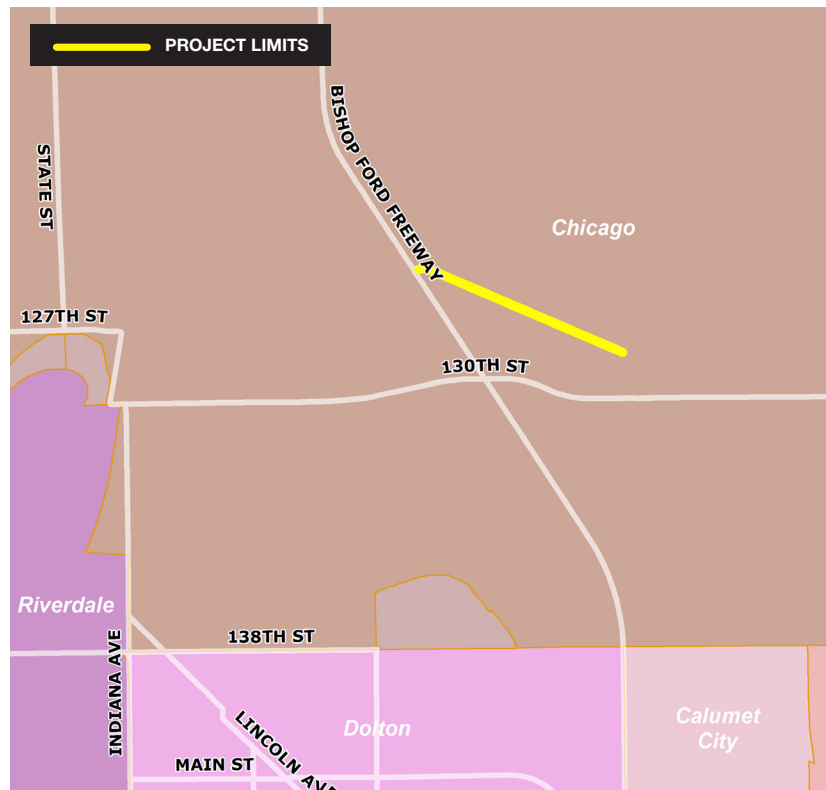


BUTLER DRIVE: IMPROVING SAFETY AND MOBILITY OF TRUCK TRAFFIC AT THE ILLINOIS PORT DISTRICT

PROJECT APPLICANT	COUNTY BOARD DISTRICT(S)	PROJECT TYPE
Illinois International Port District	4	Freight
PROJECT PHASE	INVEST IN COOK GRANT AWARD	TOTAL PHASE COST
Preliminary Engineering	\$300,000	\$300,000

PROJECT DESCRIPTION

This grant funds preliminary engineering for the reconstruction of Butler Drive in support of numerous bulk material suppliers and logistics firms operating in the Illinois International Port District. On average, 300 trucks enter the Port every day. Butler Drive's improvement will eliminate degraded pavement and dirt sections, standing water after storms, and safety issues associated with the existing road's poor condition.



ALIGNMENT WITH *CONNECTING COOK COUNTY*

- **Supports the region's role as a freight center** by:
 - Fostering efficient operations and growth in the freight sector;
 - Reinforcing freight-supportive land uses;
- **Promotes equal access** to opportunities by facilitating economic growth in an economically distressed community;
- **Maintains and modernizes** existing transportation infrastructure; and
- **Increases investment in transportation** by leveraging other funding.



Department of
Transportation
and Highways



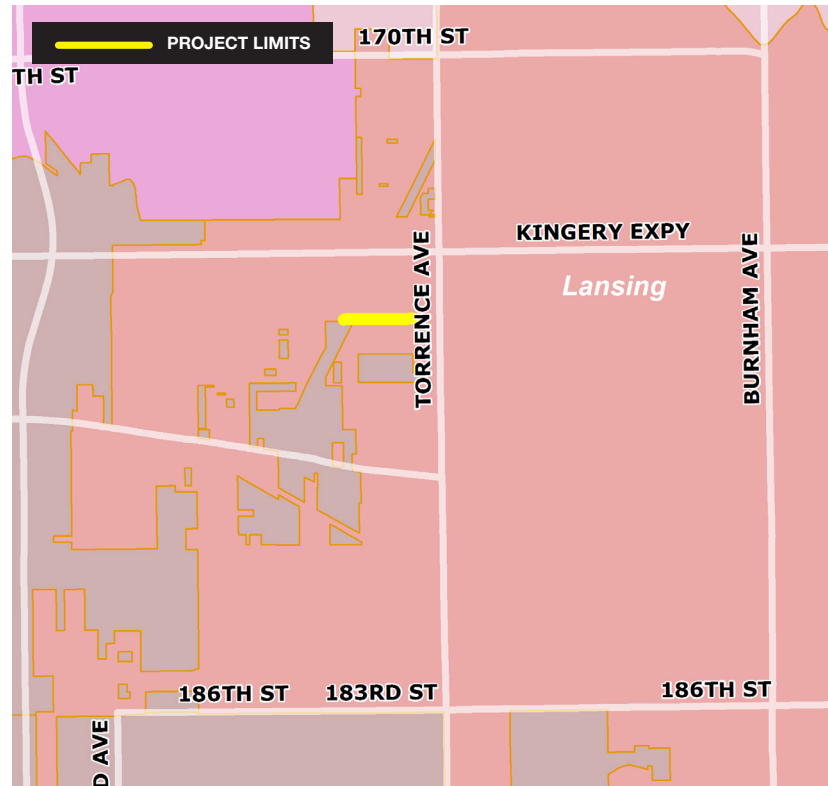
AN INITIATIVE OF:  CONNECTING
COOK COUNTY

CONNECTING PEDESTRIANS TO PACE

PROJECT APPLICANT	COUNTY BOARD DISTRICT(S)	PROJECT TYPE
Village of Lansing	4	Bike/Ped
PROJECT PHASE	INVEST IN COOK GRANT AWARD	TOTAL PHASE COST
Preliminary Engineering	\$70,000	\$102,300

PROJECT DESCRIPTION

This grant is for preliminary engineering to build a sidewalk along the south side of 176th Place between Torrence Avenue and Locust Street. The intersection of 176th Place and Torrence Avenue is home to several neighborhood commercial businesses and a bus stop for Pace Route No. 358/Torrence, which has 540 riders a day and provides weekday and Saturday service from the Pace Chicago Heights Terminal to the South Shore Railroad.



ALIGNMENT WITH *CONNECTING COOK COUNTY*

- **Prioritizes transit and other transportation alternatives** by encouraging non-auto trips;
- **Promotes equal access to opportunities** in disadvantaged communities in the south suburbs; and
- **Increases investment in transportation** by leveraging other funding.

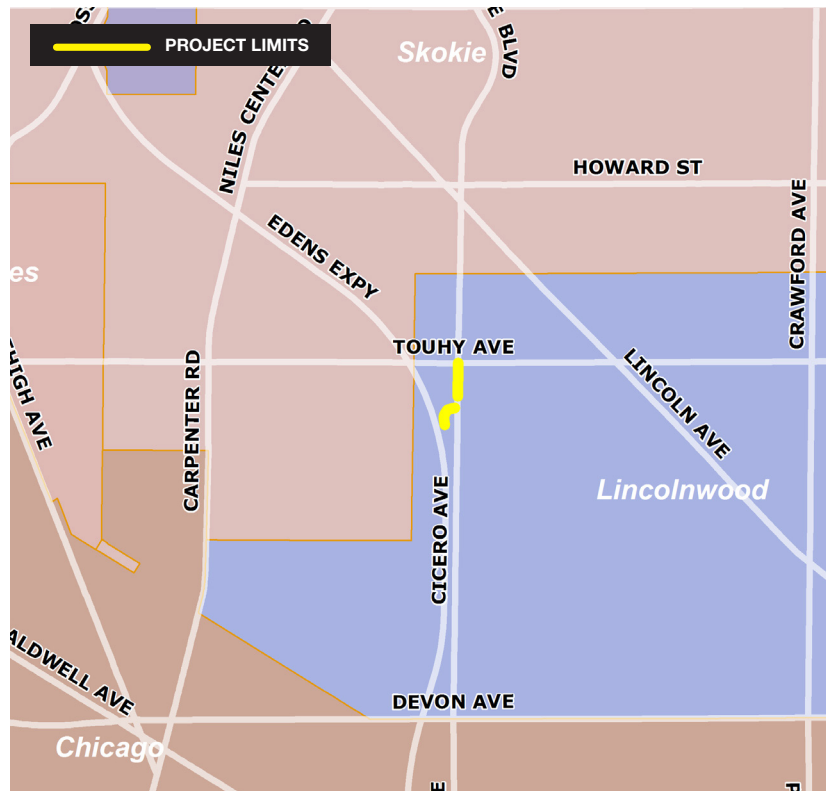


TOUHY AVENUE AND CICERO AVENUE GEOMETRY IMPROVEMENTS

PROJECT APPLICANT	COUNTY BOARD DISTRICT(S)	PROJECT TYPE
Village of Lincolnwood	13	Roadway
PROJECT PHASE	INVEST IN COOK GRANT AWARD	TOTAL PHASE COST
Preliminary Engineering	\$175,000	\$250,000

PROJECT DESCRIPTION

This grant will fund preliminary engineering for the Touhy and Cicero Geometry Improvement Project in Lincolnwood. Presently traffic backs up 600 feet or more onto the Edens Expressway because the ramp is too narrow and lacks a right-hand turn lane onto southbound Cicero. This study will lead to mobility improvements by examining the options that exist for: widening the northbound Edens – eastbound Touhy exit ramp, widening Cicero Avenue between the ramp and Touhy Avenue, creating a right-turn lane to southbound Cicero, and installing traffic signal and ADA improvements at the intersection of Touhy and Cicero that make for a better and safer pedestrian experience.



ALIGNMENT WITH *CONNECTING COOK COUNTY*

- **Prioritizes transit and other transportation alternatives** by encouraging non-auto trips;
- **Maintains and modernizes** existing transportation infrastructure serving multiple north shore municipalities while also enhancing the quality of life in Lincolnwood, the host community for the transportation facility; and
- **Increases investment in transportation** by leveraging other funding.

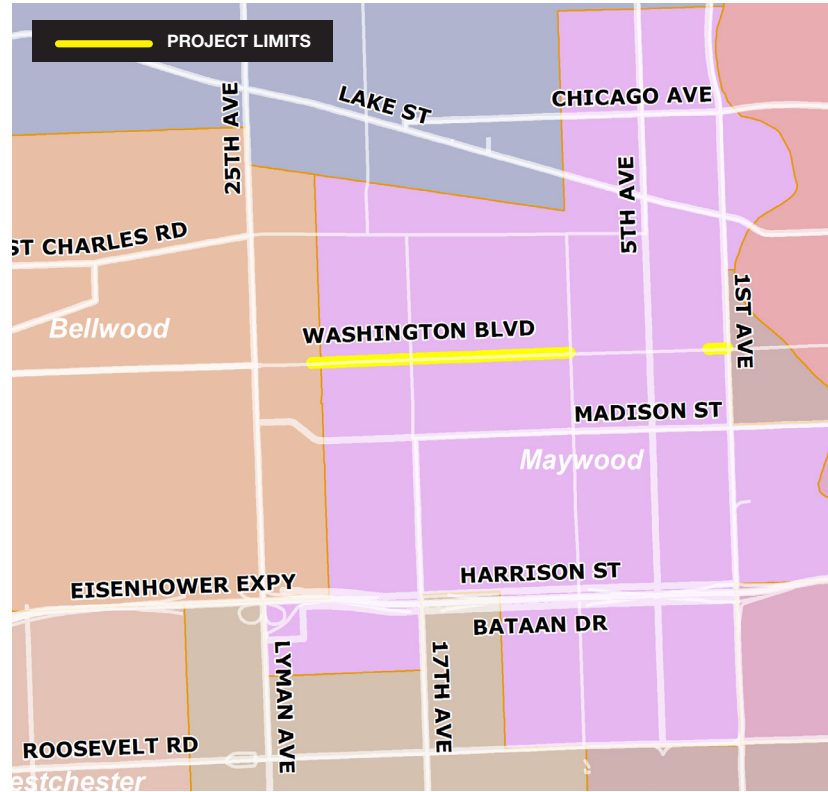


WASHINGTON BLVD - 22nd AVENUE TO 1st AVENUE

PROJECT APPLICANT	COUNTY BOARD DISTRICT(S)	PROJECT TYPE
Village of Maywood	1	Roadway with Bike/Ped
PROJECT PHASE	INVEST IN COOK GRANT AWARD	TOTAL PHASE COST
Preliminary Engineering	\$206,000	\$206,000

PROJECT DESCRIPTION

Washington Boulevard connects residents to Washington Dual Language Academy elementary school, two Village parks, the 5th Avenue Business District, and the Cook County Forest Preserve on the east side of the Village. This grant funds preliminary engineering for roadway resurfacing, new curb and gutter, the potential for bike lanes, and improved drainage. An improved Washington Boulevard will enhance access to the forest preserves and Pace bus service.



ALIGNMENT WITH *CONNECTING COOK COUNTY*

- **Prioritizes transit and other transportation alternatives** by adding a bike lane for residents wanting to bike and or walk to connect to public transportation or the Forest Preserve;
- **Promotes equal access to opportunities** by investing in an underserved community in the west suburbs; and
- **Maintains and modernizes** existing transportation infrastructure while also enhancing the quality of life in the affected communities.

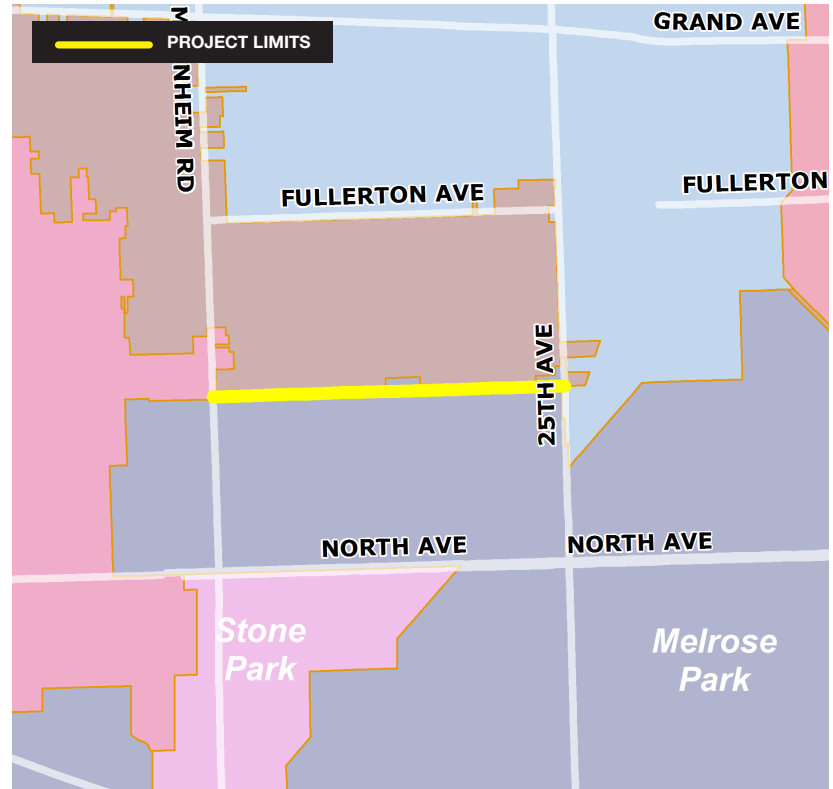


ARMITAGE AVENUE RECONSTRUCTION

PROJECT APPLICANT	COUNTY BOARD DISTRICT(S)	PROJECT TYPE
Village of Melrose Park	16	Freight, Bike/Ped
PROJECT PHASE	INVEST IN COOK GRANT AWARD	TOTAL PHASE COST
Preliminary Engineering	\$203,000	\$350,000

PROJECT DESCRIPTION

Armitage Avenue serves as the northern border and primary truck route for Melrose Park's industrial district and the southern border for a residential area located in unincorporated Cook County. This preliminary engineering grant will enable the preparation of a multimodal concept for the road's reconstruction that addresses: local industry's needs to ship materials and products by truck, residents' desire to bike and walk, and flooding associated with Silver Creek following major storms.



ALIGNMENT WITH *CONNECTING COOK COUNTY*

- **Prioritizes transit and transportation alternatives** by providing a multi-use trail for residents wanting to bike and walk and/or to connect to public transportation;
- **Supports the region's role as a freight center** by:
 - Fostering efficient operations and growth in the freight sector;
 - Reinforcing freight-supportive land uses;
- **Maintains and modernizes** existing transportation infrastructure while also enhancing the quality of life in the affected communities; and
- **Increases investment in transportation** by leveraging other funding.



Department of
Transportation
and Highways



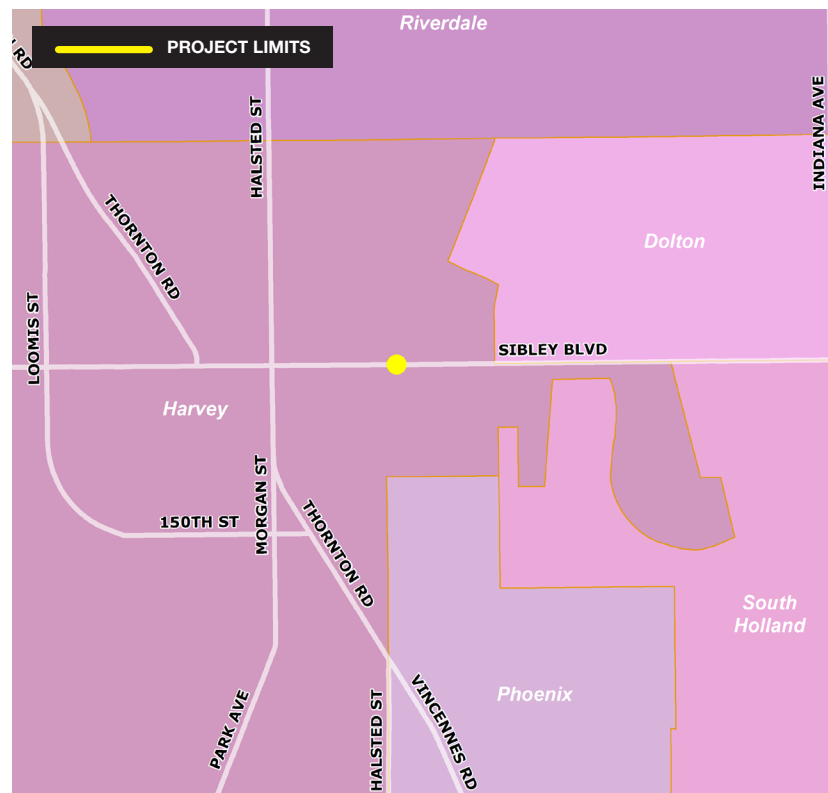
AN INITIATIVE OF: CONNECTING
COOK COUNTY

RENOVATION OF THE 147th STREET (SIBLEY BLVD.) METRA ELECTRIC STATION

PROJECT APPLICANT	COUNTY BOARD DISTRICT(S)	PROJECT TYPE
Metra, the Commuter Rail Division of the RTA	5	Transit
PROJECT PHASE	INVEST IN COOK GRANT AWARD	TOTAL PHASE COST
Design Engineering	\$300,000	\$600,000

PROJECT DESCRIPTION

The 147th Street Metra Electric Station in the City of Harvey has more than 1,000 weekday riders and is in need of renovation. This grant will fund design engineering to create a new station entrance, new warming shelters and platforms, a new elevator for ADA accessibility, and a canopy over half of the platform area.



ALIGNMENT WITH *CONNECTING COOK COUNTY*

- **Prioritizes transit and other transportation alternatives** by providing public transportation facilities that make riding transit a more enjoyable experience;
- **Promotes equal access** by investing in an underserved community in south Cook County;
- **Maintains and modernizes** existing transportation infrastructure; and
- **Increases investment in transportation** by leveraging other funding.

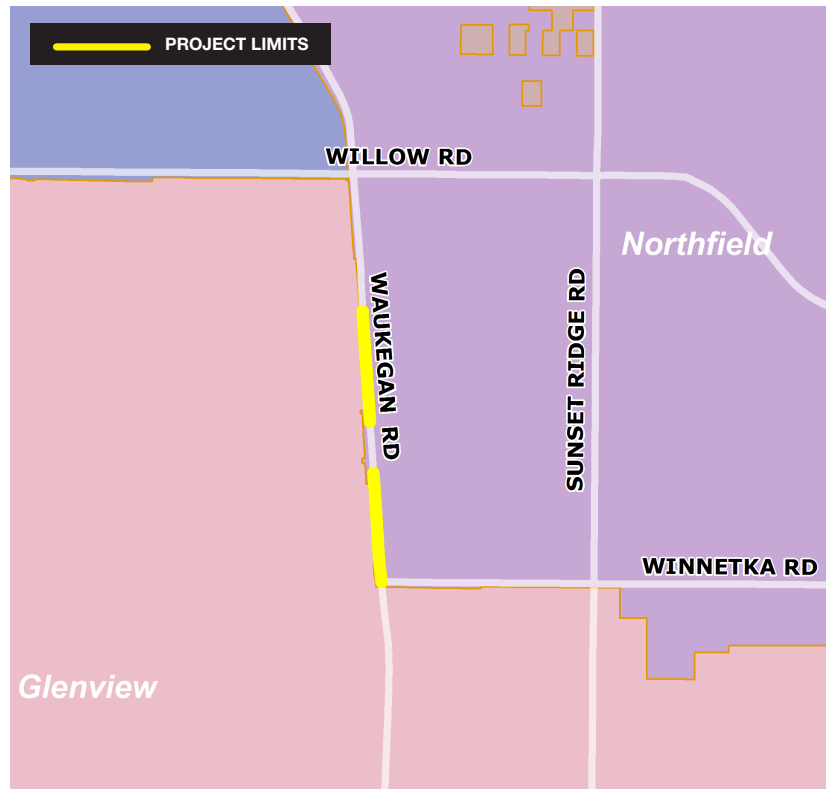


WAUKEGAN ROAD SIDEWALK GAP

PROJECT APPLICANT	COUNTY BOARD DISTRICT(S)	PROJECT TYPE
Village of Northfield	14	Bike/Ped
PROJECT PHASE	INVEST IN COOK GRANT AWARD	TOTAL PHASE COST
Construction	\$201,000	\$288,500

PROJECT DESCRIPTION

This grant will fund the construction of a sidewalk on the east side of Waukegan Road from the College of American Pathologists to Winnetka Road—one of the only stretches on Waukegan Road in Cook County without a sidewalk. The newly-built sidewalks will serve low to moderate income individuals living in residential areas adjoining Waukegan Road. This project will provide safe pedestrian access to existing transit routes and increase the number of accessible jobs to those who depend on public transit for getting to work.



ALIGNMENT WITH *CONNECTING COOK COUNTY*

- **Prioritizes transit and transportation alternatives** by encouraging non-auto trips;
- **Promotes equal access** for an underserved community; and
- **Increases investment in transportation** by leveraging other funding.

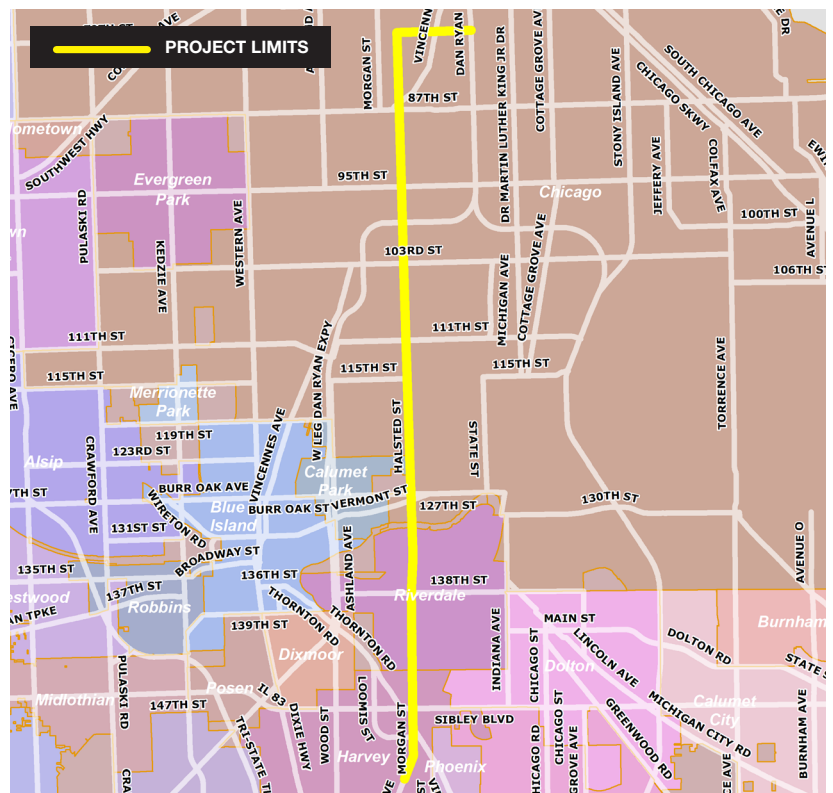


SOUTH HALSTED BUS CORRIDOR ENHANCEMENT PROJECT: ENVIRONMENTAL ANALYSIS AND ADVANCED DESIGN

PROJECT APPLICANT	COUNTY BOARD DISTRICT(S)	PROJECT TYPE
Pace Suburban Bus	3, 4 and 5	Transit
PROJECT PHASE	INVEST IN COOK GRANT AWARD	TOTAL PHASE COST
Feasibility/Planning Study	\$500,000	\$600,000

PROJECT DESCRIPTION

This grant funds a study to explore the feasibility of installing targeted bus-priority treatments such as Transit Signal Priority, limited stop service, and raised platforms. The study will also look at coordinating service improvements from the CTA Red Line 79th Street Station in Chicago to the Pace Transportation Center at 154th Street and Park Avenue in the City of Harvey. CTA and Pace operate two routes each, including Pace's only 24-hour route, along this 11-mile corridor. Bus priority treatments along South Halsted are designed to improve critical transit services through predominantly low- and moderate-income, minority communities.



ALIGNMENT WITH *CONNECTING COOK COUNTY*

- **Prioritizes transit and other transportation alternatives** by encouraging non-auto trips;
- **Promotes equal access** to opportunities in disadvantaged communities in south Cook County;
- **Maintains and modernizes** existing infrastructure; and
- **Increases investment in transportation** by leveraging other funding.

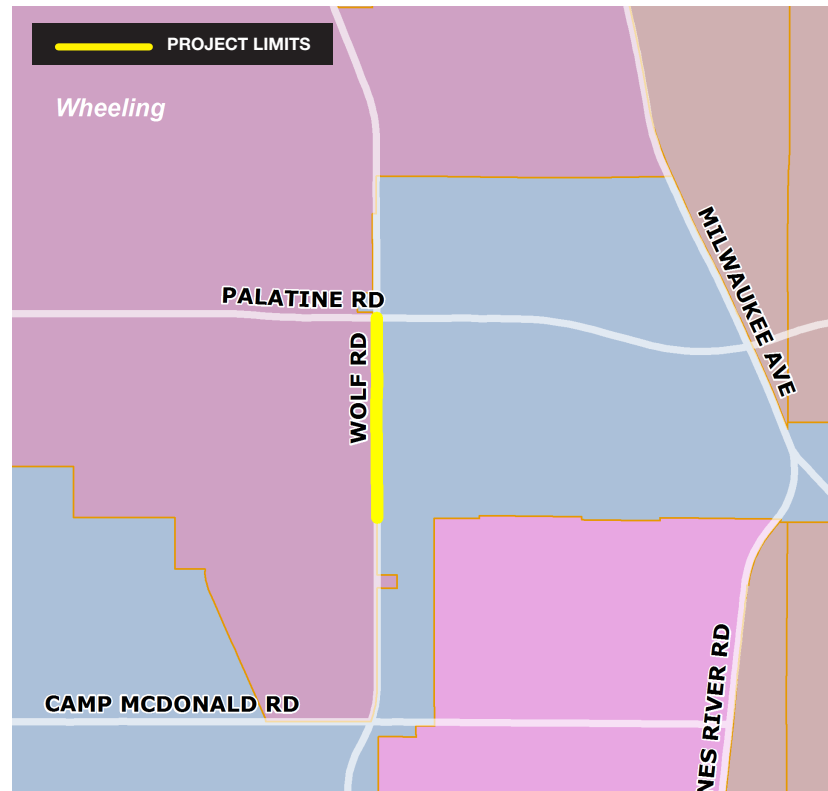


WOLF ROAD SIDEWALK CONNECTIVITY PROJECT

PROJECT APPLICANT	COUNTY BOARD DISTRICT(S)	PROJECT TYPE
City of Prospect Heights	14	Bike/Ped
PROJECT PHASE	INVEST IN COOK GRANT AWARD	TOTAL PHASE COST
Construction	\$140,000	\$385,000

PROJECT DESCRIPTION

This grant funds the construction of sidewalks along Wolf Road to improve pedestrian and bicycle safety and mobility, and to provide an improved city streetscape. The project consists of a new sidewalk linking Wolf Road to intersecting sidewalks thereby creating a more fluid system for commuters, residents and students to travel without a car. The proposed sidewalk will connect the city's largest industrial park, Fed Ex's headquarters, Metra and Pace stations, the Briarwood Apartment Complex and Harper College.



ALIGNMENT WITH *CONNECTING COOK COUNTY*

- **Prioritizes transit and transportation alternatives** by encouraging non-auto trips;
- **Promotes equal access** to opportunities for an underserved community; and
- **Increases investment in transportation** by leveraging other funding.

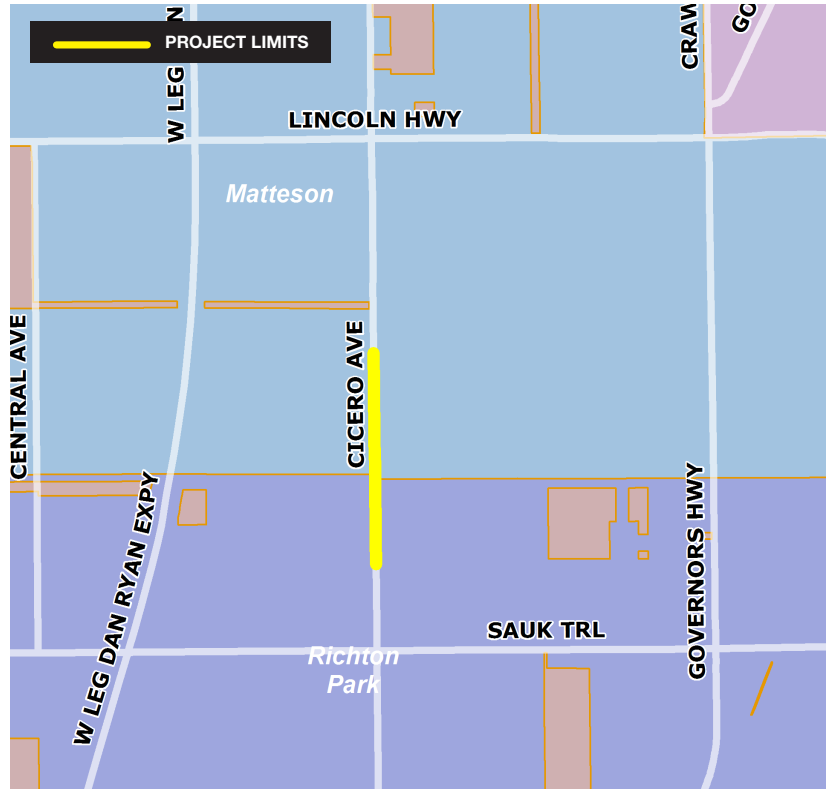


POPLAR AVENUE BIKE TRAIL EXTENSION

PROJECT APPLICANT	COUNTY BOARD DISTRICT(S)	PROJECT TYPE
Village of Richton Park	6	Bike/Ped
PROJECT PHASE	INVEST IN COOK GRANT AWARD	TOTAL PHASE COST
Preliminary Engineering	\$45,000	\$45,000

PROJECT DESCRIPTION

This grant funds preliminary engineering for the extension of the existing Poplar Avenue Bicycle Trail in Richton Park from the Village's Metra station and its current terminus at Cicero Avenue to the popular Old Plank Trail in Matteson affording residents safe and expanded regional biking opportunities. To improve safety, a pedestrian crossing gate at the Metra train tracks and a single yellow stripe down the center of the path to separate users will be examined.



ALIGNMENT WITH *CONNECTING COOK COUNTY*

- **Prioritizes transit and transportation alternatives** by encouraging non-auto trips; and
- **Promotes equal access** to opportunities in the south suburbs.

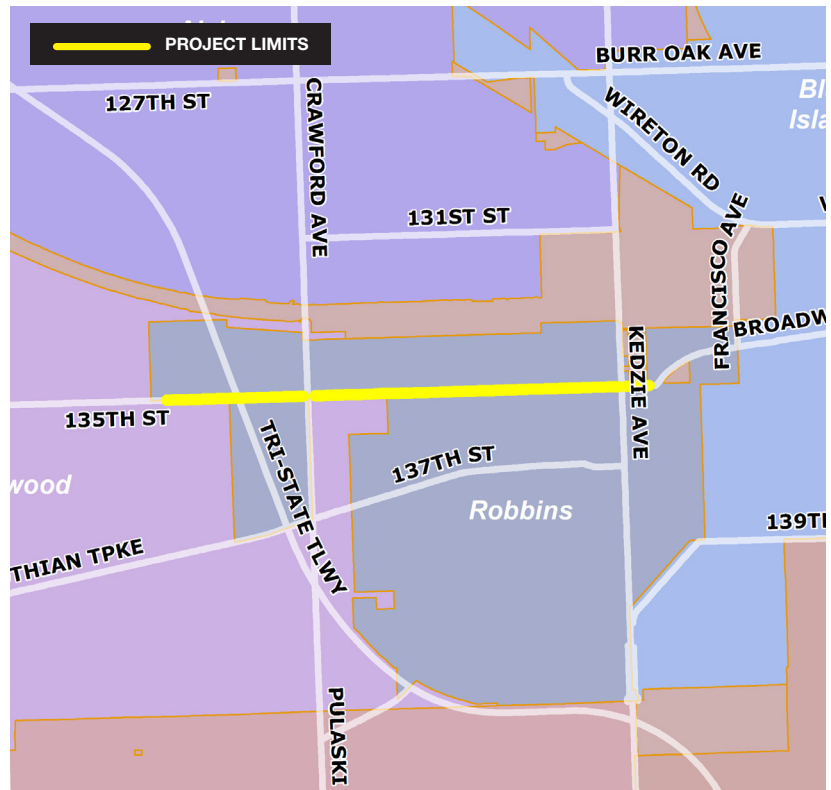


135th STREET RESURFACING PROJECT

PROJECT APPLICANT	COUNTY BOARD DISTRICT(S)	PROJECT TYPE
Village of Robbins	5 and 6	Roadway
PROJECT PHASE	INVEST IN COOK GRANT AWARD	TOTAL PHASE COST
Construction	\$330,000	\$1,650,000

PROJECT DESCRIPTION

The Village has identified three priority development areas for: (1) water detention and open and recreational spaces, (2) a transit oriented development, and (3) economic development as part of a community planning process. This grant will fund the resurfacing of 135th Street to facilitate redevelopment of the economic development district. This construction project will include ADA-compliant sidewalks, detectable warnings and handicap ramps to connect residents and workers to the proposed employment, recreational and residential areas.



ALIGNMENT WITH *CONNECTING COOK COUNTY*

- **Prioritizes transit and other transportation alternatives** by encouraging non-auto trips;
- **Promotes equal access** to opportunities by investing in underserved communities in the south suburbs;
- **Maintains and modernizes** existing transportation infrastructure while also enhancing the quality of life in the affected communities; and
- **Increases investment in transportation** by leveraging other funding.

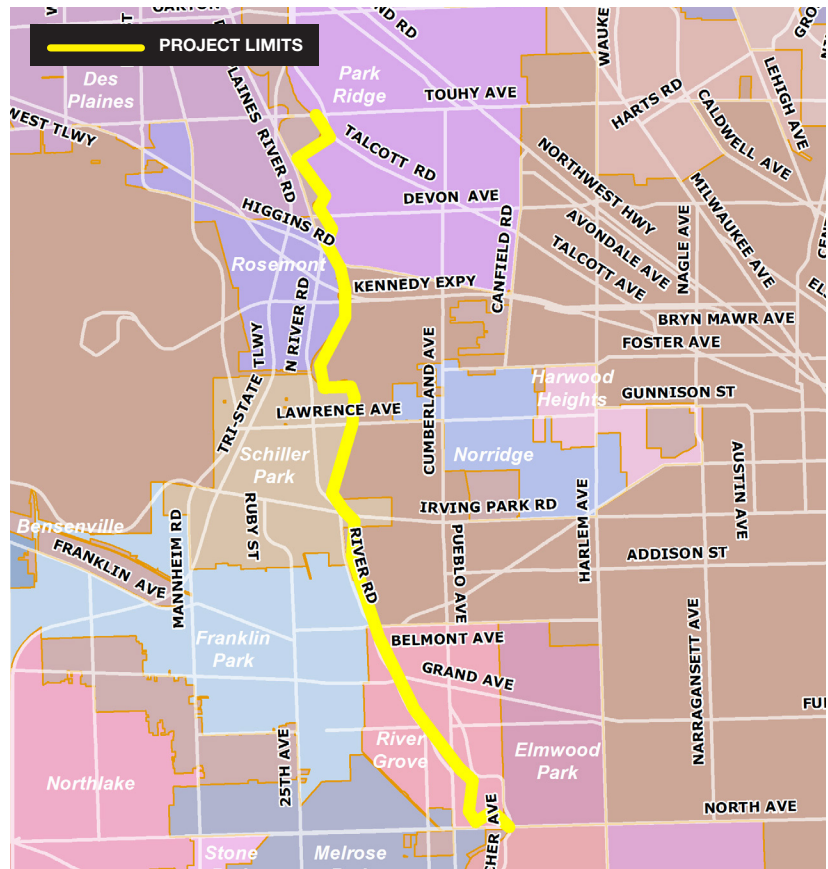


DES PLAINES RIVER TRAIL-TOUHY AVENUE TO NORTH AVENUE

PROJECT APPLICANT	COUNTY BOARD DISTRICT(S)	PROJECT TYPE
Village of Rosemont West Central Municipal Conference	9	Bike/Ped
PROJECT PHASE	INVEST IN COOK GRANT AWARD	TOTAL PHASE COST
Preliminary Engineering	\$309,000	\$1,030,000

PROJECT DESCRIPTION

This grant funds preliminary engineering on an 8.5-mile segment of the Des Plaines River Trail system from North Avenue to Touhy Avenue. The West Central Municipal Conference and eight west suburban municipalities recognize that long-term improvements to the Des Plaines River Trail are needed to make the trail usable following heavy rain storms when flooding makes much of the trail impassable. The Chicago Metropolitan Agency for Planning identifies the Trail as a regionally-significant facility in its Northeastern Illinois Regional Greenways and Trails Plan because of its recreational value and the connections it provides between communities, parks, open spaces and other natural areas.



ALIGNMENT WITH *CONNECTING COOK COUNTY*

- **Prioritizes transit and other transportation alternatives** by encouraging non-auto trips and access to the region's many natural assets.
- **Maintains and modernizes** existing transportation infrastructure while also enhancing the quality of life in the affected communities; and
- **Increases investment in transportation** by leveraging other funding.

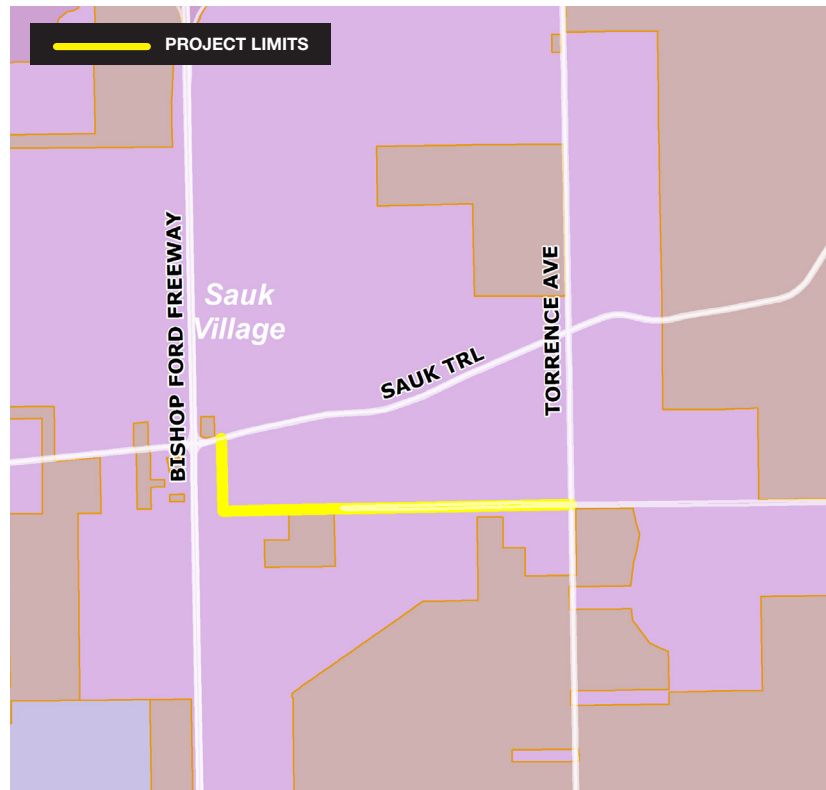


223rd STREET AND CORNELL AVENUE STREET REHABILITATION

PROJECT APPLICANT	COUNTY BOARD DISTRICT(S)	PROJECT TYPE
Village of Sauk Village	6	Roadway
PROJECT PHASE	INVEST IN COOK GRANT AWARD	TOTAL PHASE COST
Construction	\$75,000	\$754,000

PROJECT DESCRIPTION

This grant will fund construction to resurface/rehabilitate the section of 223rd Street and Cornell Avenue from Sauk Trail to Torrence Avenue—a roadway that connects residents to Pace bus service, several schools, healthcare facilities and retail stores. The project includes: repairing/removing existing curb and gutter, addressing drainage problems within the project limits, removing/replacing non-compliant and unsafe sidewalks along the route with ADA-compliant detectable warning ramps to improve pedestrian access and safety in the community.



ALIGNMENT WITH *CONNECTING COOK COUNTY*

- **Prioritizes transit and other transportation alternatives** by encouraging non-auto trips and access to the region's many natural assets;
- **Maintains and modernizes** existing transportation infrastructure while also enhancing the quality of life in the community; and
- **Increases investment in transportation** by leveraging other funding.

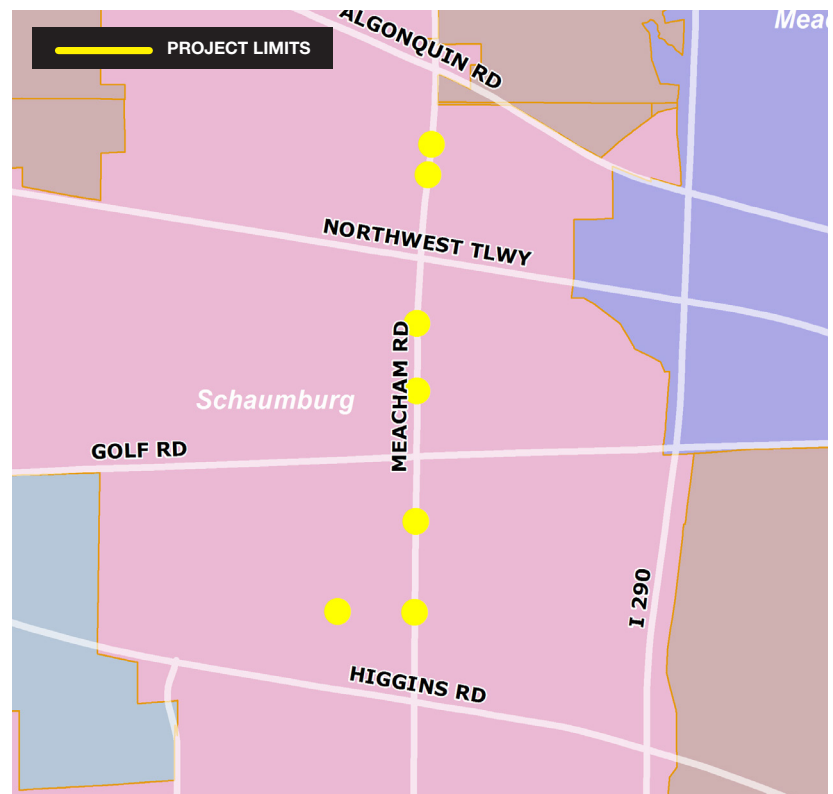


GREATER WOODFIELD AREA TRAFFIC FLOW IMPROVEMENTS

PROJECT APPLICANT	COUNTY BOARD DISTRICT(S)	PROJECT TYPE
Village of Schaumburg	15	Roadway
PROJECT PHASE	INVEST IN COOK GRANT AWARD	TOTAL PHASE COST
Construction	\$200,000	\$400,000

PROJECT DESCRIPTION

Schaumburg is the largest economic center in the State of Illinois outside the City of Chicago, and the Greater Woodfield Area has the highest concentration of business activity in the Village. This grant will modernize seven highly-congested intersections around Woodfield Mall and other shopping centers that present challenges for the fluid movement of traffic during peak hours. The goal of the project is to improve traffic flow by replacing the current loop detection system with video camera detection.



ALIGNMENT WITH *CONNECTING COOK COUNTY*

- **Maintains and modernizes** existing transportation infrastructure while also enhancing the quality of life in the community; and
- **Increases investment in transportation** by leveraging other funding.

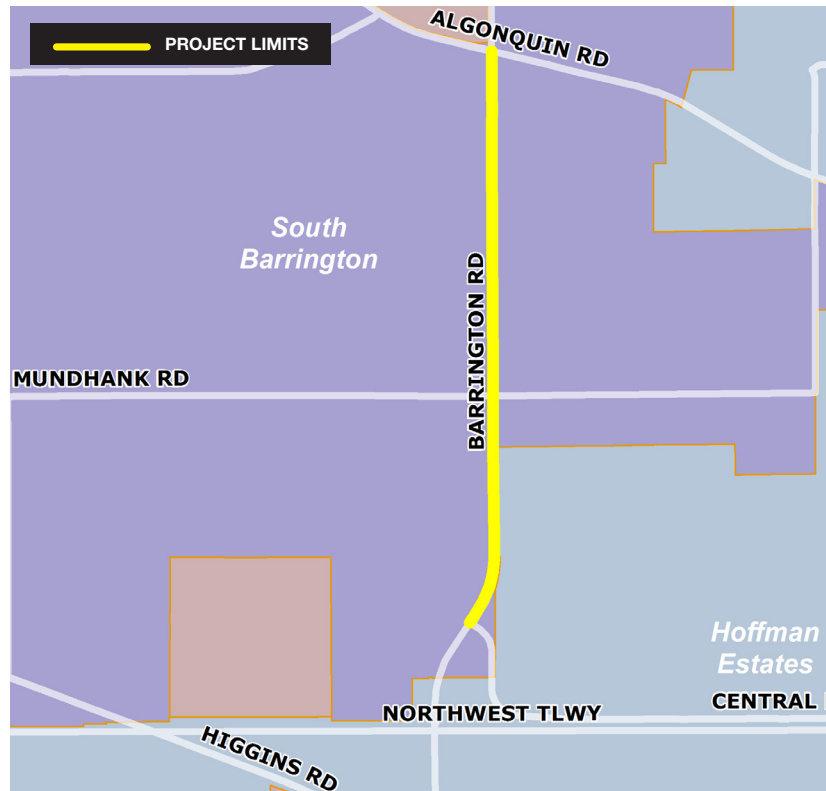


BARRINGTON ROAD BIKE PATH

PROJECT APPLICANT	COUNTY BOARD DISTRICT(S)	PROJECT TYPE
Village of South Barrington	15	Bike/Ped
PROJECT PHASE	INVEST IN COOK GRANT AWARD	TOTAL PHASE COST
Construction	\$76,000	\$76,000

PROJECT DESCRIPTION

This grant funds construction of a multi-use bike and pedestrian asphalt path along the west side of Barrington Road from Algonquin Road to Central Road. This bike path will connect to the Crabtree Nature Center Trails and the Poplar Creek Trail System as recommended by the Chicago Metropolitan Agency for Planning in the bikeway feasibility study for Fox River Trail to Old Stover Trail and by IDOT as part of the Barrington Road widening project.



ALIGNMENT WITH *CONNECTING COOK COUNTY*

- **Prioritizes transit and transportation alternatives** by encouraging non-auto trips.



Department of
Transportation
and Highways



AN INITIATIVE OF: CONNECTING
COOK COUNTY

FREIGHT PLANNING FOR THE DOLTON AND RIVERDALE GATEWAY

PROJECT APPLICANT	COUNTY BOARD DISTRICT(S)	PROJECT TYPE
South Suburban Mayors and Managers Association	5	Freight
PROJECT PHASE	INVEST IN COOK GRANT AWARD	TOTAL PHASE COST
Planning Study	\$120,000	\$140,000

PROJECT DESCRIPTION

At-grade railroad crossings disproportionately affect Cook County's south suburbs. This planning study will examine 10 at-grade road/rail crossings in the communities of Dolton and Riverdale to determine which ones rank most highly from the perspective of residents and business people and to explore possible solutions for improving mobility in these two communities.



ALIGNMENT WITH *CONNECTING COOK COUNTY*

- **Supports the region's role as a freight center** by:
 - Fostering efficient operations and growth in the freight sector;
 - Reinforcing freight-supportive land uses;
- **Promotes equal access** to opportunities by
 - Addressing the inequitable provision of transportation assets and services;
 - Providing more reliable mobility in an area that experiences frequent delays as a result of freight trains;
- **Maintains and modernizes** existing transportation infrastructure while also enhancing the quality of life in the affected communities; and
- **Increases investment in transportation** by leveraging other funding.

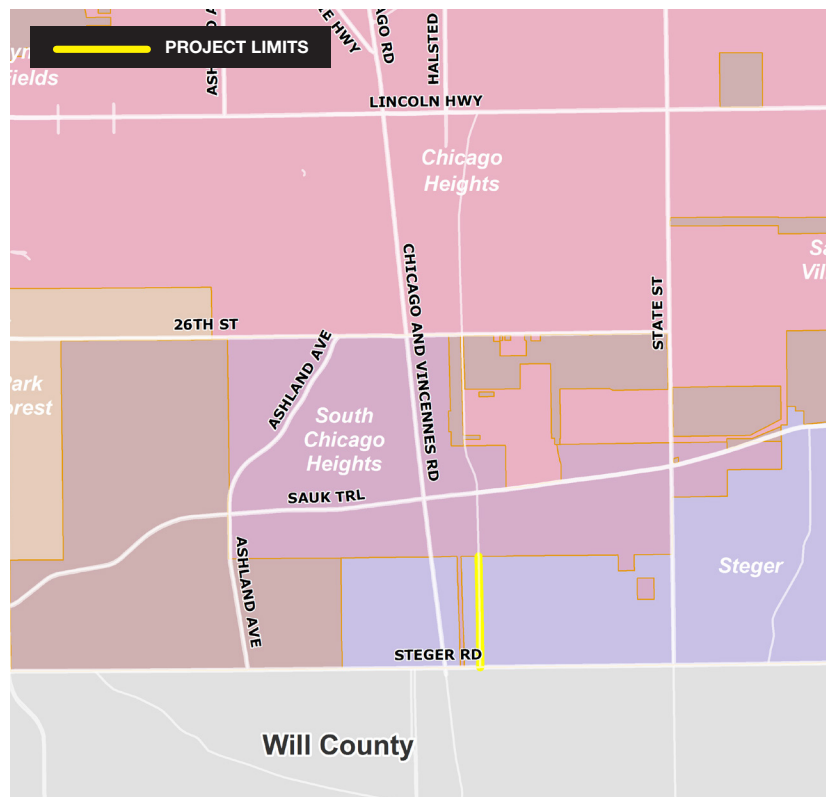


UNION AVENUE ROAD DIET, BIKE LANE AND SIDEWALK INFILL PROJECT

PROJECT APPLICANT	COUNTY BOARD DISTRICT(S)	PROJECT TYPE
Village of Steger	6	Roadway, Bike/Ped
PROJECT PHASE	INVEST IN COOK GRANT AWARD	TOTAL PHASE COST
Construction	\$90,000	\$501,658

PROJECT DESCRIPTION

This grant funds construction on Union Avenue to reduce the number of auto lanes to allow for north- and south-bound bicycle lanes. The project continues a recently completed road diet completed along this corridor by South Chicago Heights. It also replaces sidewalks where they are failing and eliminates sidewalk gaps by installing new walkways. Pace operates bus service along this corridor so the improvement benefits pedestrians, bikers, transit riders and drivers.



ALIGNMENT WITH *CONNECTING COOK COUNTY*

- **Prioritizes transit and other transportation alternatives** by encouraging non-auto trips;
- **Promotes equal access** to opportunities in disadvantaged communities in south Cook County;
- **Maintains and modernizes** existing infrastructure while also enhancing the quality of life in the affected communities; and
- **Increases investment in transportation** by leveraging other funding.

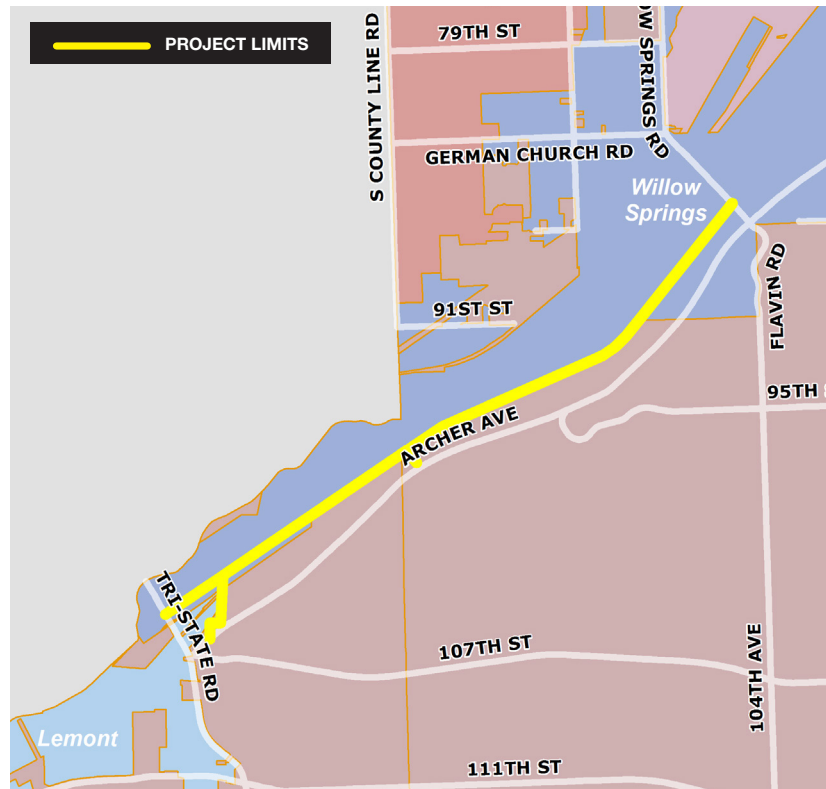


GREEN CORRIDOR

PROJECT APPLICANT	COUNTY BOARD DISTRICT(S)	PROJECT TYPE
Village of Willow Springs	17	Freight, Bike/Ped
PROJECT PHASE	INVEST IN COOK GRANT AWARD	TOTAL PHASE COST
Preliminary Engineering	\$48,500	\$385,000

PROJECT DESCRIPTION

This grant funds preliminary engineering for the construction of a new truck route connecting Archer Avenue to 40 acres of undeveloped Metropolitan Water Reclamation District property along the Illinois and Michigan Shipping Canal. Several businesses have expressed interest in developing this property for barge-oriented shipping firms but the lack of an access road has deterred redevelopment. The new roadway will serve existing industrial businesses along the Canal and will also improve safety along the adjoining bicycle and pedestrian trail. A bathroom and picnic grove used by riders of this trail will also be improved.



ALIGNMENT WITH *CONNECTING COOK COUNTY*

- **Prioritizes transit and transportation alternatives** by providing more amenities for bicyclists and pedestrians and safer crossings at the trail's crossing with the two intersecting roadways;
- **Supports the region's role as a freight center** by:
 - Fostering efficient operations and growth in the freight sector;
 - Reinforcing freight-supportive land uses;
- **Promotes equal access** to opportunities for an underserved community;
- **Maintains and modernizes** existing transportation infrastructure; and
- **Increases investment in transportation** by leveraging other funding.

